

Project DIRECT Tier-II Service Learning at Agenda for Children

KIDS COUNT Project

Sam Goland



THE ANNIE E. CASEY
FOUNDATION

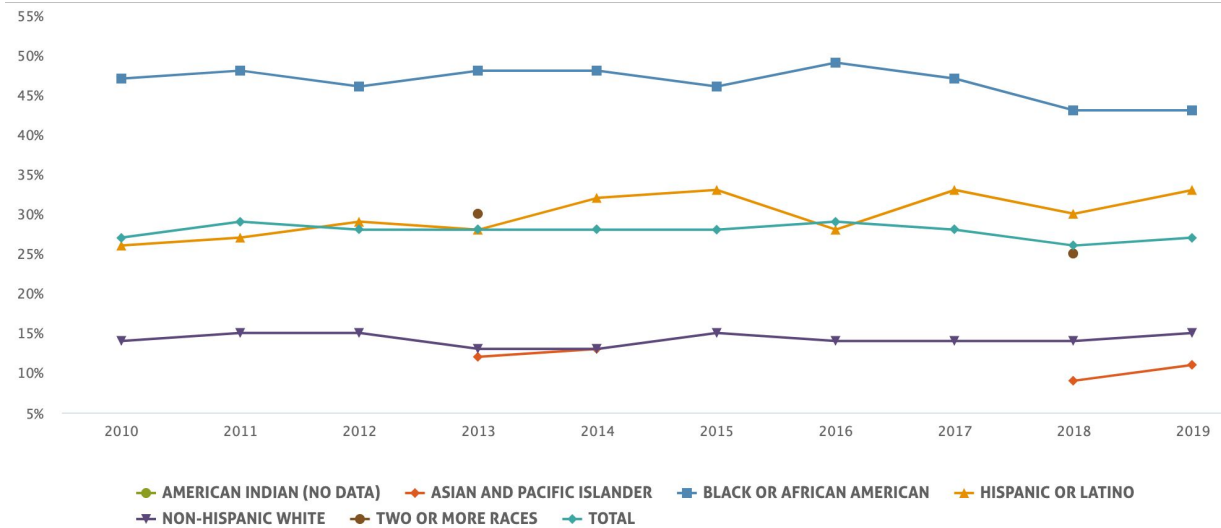
CBPR: Fundamental Aspects

(Collins et al., 2018)

- Equal collaboration between researchers and community stakeholders
 - Flexible research process shaped by the needs of the community
 - Create positive, lasting social change
-

National KIDS COUNT Data Center

- Provides data about child well-being in the United States
- Informs policy and initiatives that benefit children

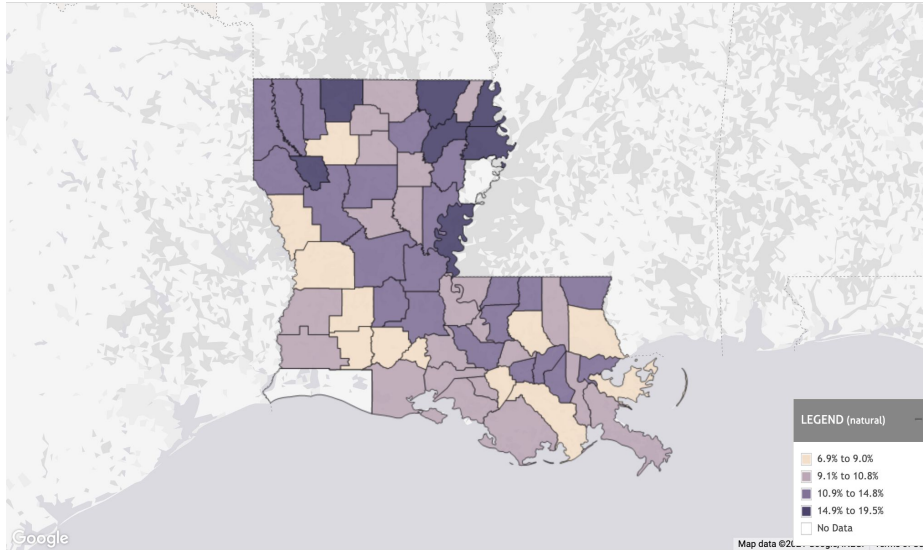


Children In Poverty By Race And Ethnicity (Percent) - 2010-2019

National KIDS COUNT
KIDS COUNT Data Center, datacenter.kidscount.org
A project of the Annie E. Casey Foundation

Agenda for Children

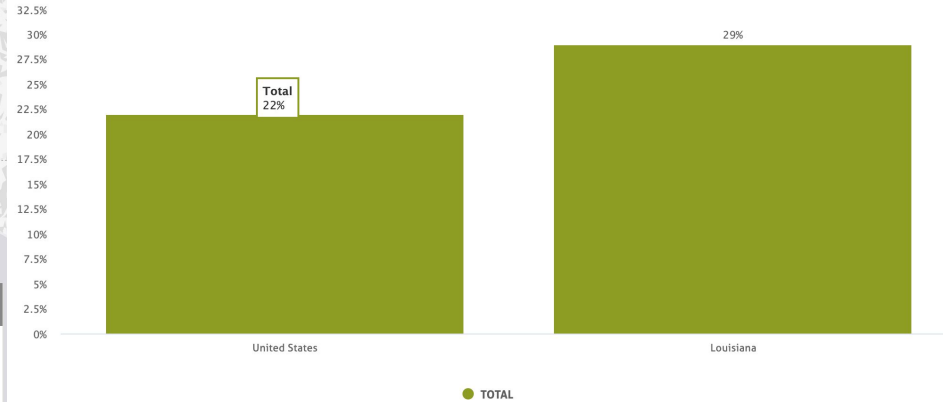
Louisiana KIDS COUNT Grantee



Low Birthweight Babies (Percent) - 2019

Agenda for Children
KIDS COUNT Data Center, datacenter.kidscount.org
A project of the Annie E. Casey Foundation

<https://datacenter.kidscount.org/data/map/1546-low-birthweight-babies?loc=20&loct=5#5/any/false/false/1729/any/7818/Purple/>



Children Who Have One Or More Emotional, Behavioral, Or Developmental Conditions (Percent) - 2017-2018

National KIDS COUNT
KIDS COUNT Data Center, datacenter.kidscount.org
A project of the Annie E. Casey Foundation

<https://datacenter.kidscount.org/data/bar/10668-children-who-have-one-or-more-emotional-behavioral-or-developmental-conditions?loc=20&loct=2#2/20/true/1648/any/20456>

Independent Projects

Data Visualizations

Goal: Research other child health organizations' approach to data visualization to inform Agenda for Children's presentations of KIDS COUNT data

Data Indicator Cataloging

Goal: Compile list of other states' indicators to investigate gaps in Louisiana KIDS COUNT data

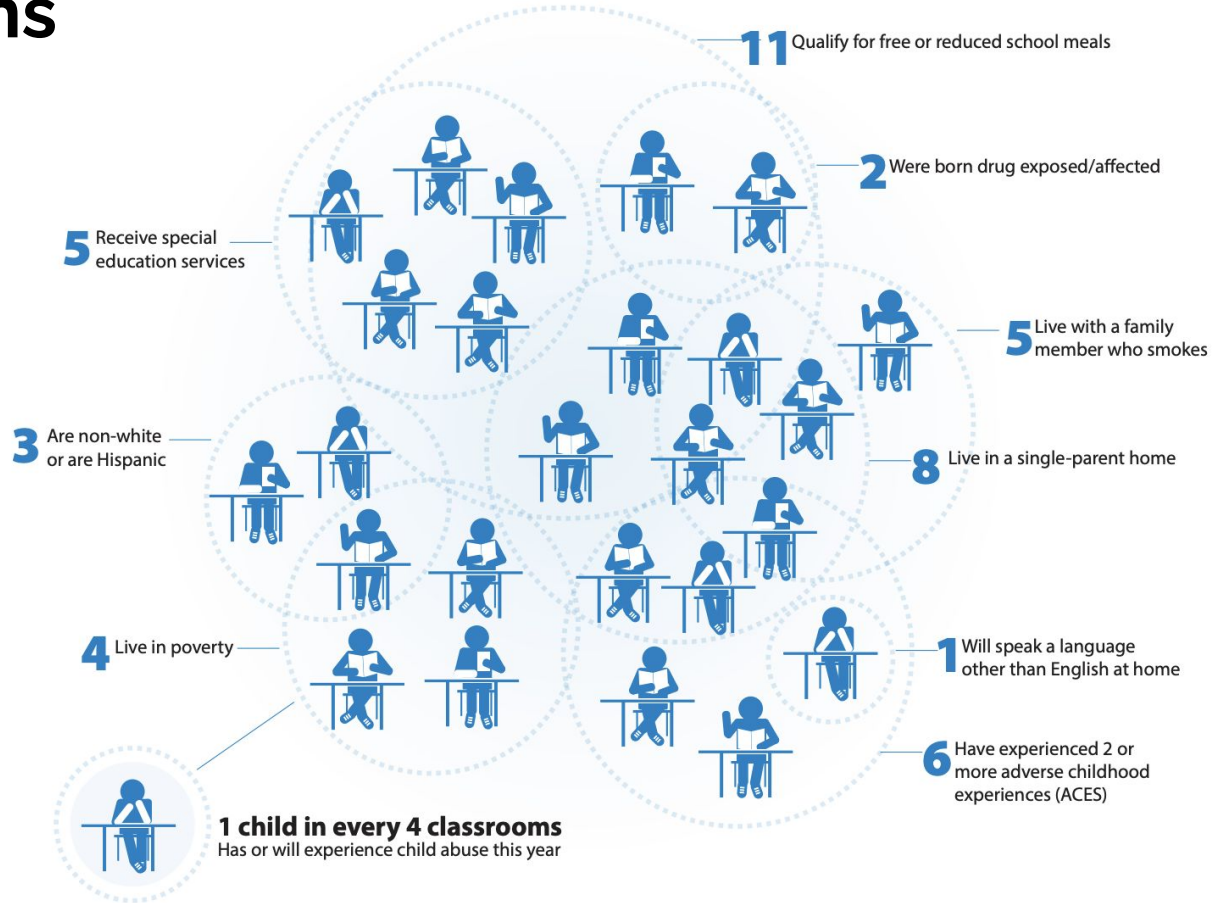
A Hypothetical Classroom of 25 First Graders in Maine

Data Visualizations

Maine Children's Alliance
(2019)

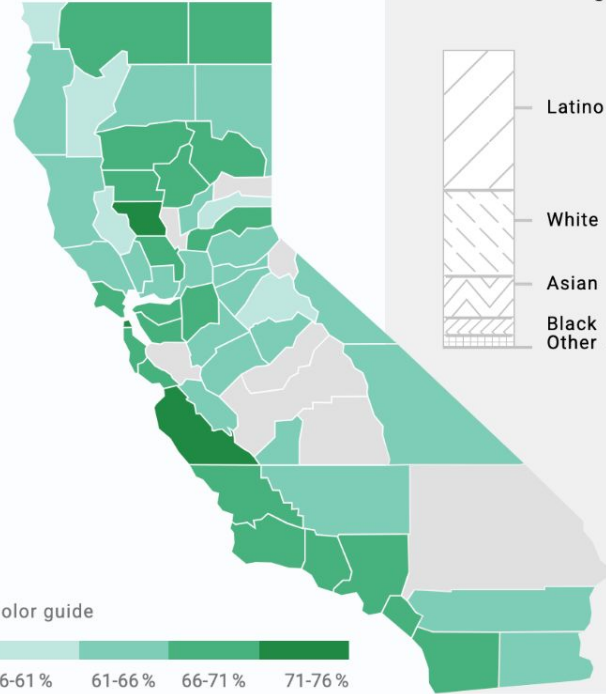
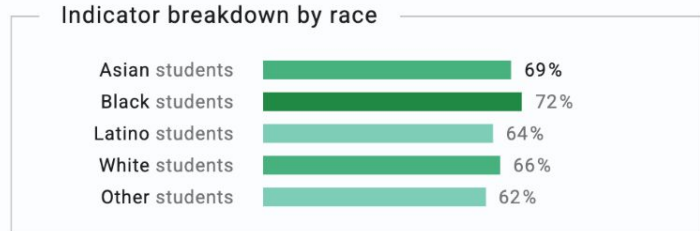
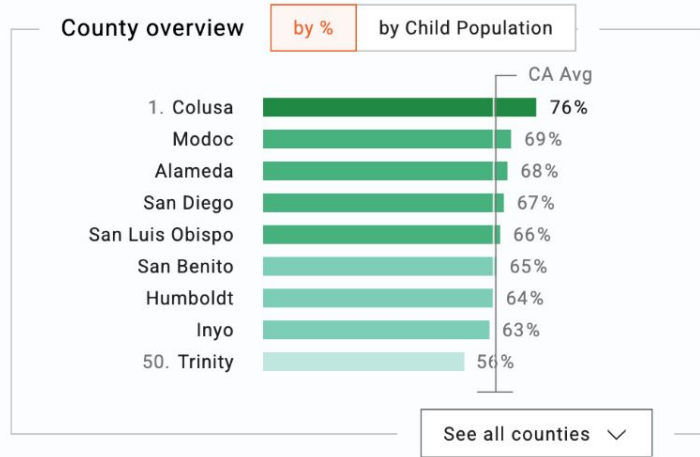
What does this graphic
communicate well?

Ideas for Agenda's
presentation of KIDS
COUNT data



65% of students did not experience chronic sadness in California in 2019.

[Sources and Notes](#)

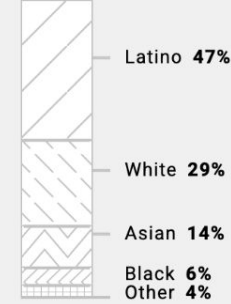


Most Recent State Demographics

14 million children/youth live in California

9.0 million ages 0 to 17

4.9 million ages 18 to 25



9% youth who identify as LGBTQ

195,000 students experiencing homelessness

4,120,630 children with at least one immigrant parent

42% children at or below 2x the poverty level

(Children Now, 2021)

Data Indicator Cataloging

- ~800 indicators
- Identify gaps in research

DEMOGRAPHICS

ECONOMIC WELL-BEING

EDUCATION

FAMILY & COMMUNITY

HEALTH

SAFETY & RISKY BEHAVIORS

RACE & ETHNICITY

COVID-19

Data Indicator Cataloging

Indicator	Category	Sub-Category	AL	AK	AZ	AR	CA	CO
Total Population	Demographics	Basic Demograpl						X
Total county population	Demographics	Basic Demograpl	X					
Child under age 20 population	Demographics	Basic Demograpl	X					
Pre-K children	Demographics	Basic Demograpl	X					
Total Population by Race	Demographics	Basic Demograpl				X		
Number of youth who identify as LGBTQ	Demographics	Basic Demograpl					X	
Child Population (Under 18)	Demographics	Basic Demograpl						
Child Population: American Community Survey (ACS), 2005-201	Demographics	Basic Demograpl						
Child population by gender	Demographics	Basic Demograpl	X	X	X	X	X	X
Child population 0-19 by race	Demographics	Basic Demograpl		X				
Child population 0-19 by gender	Demographics	Basic Demograpl		X				
Child population by age	Demographics	Demographic Ind	X					

Connections to CBPR

- KIDS COUNT is a database of statistics (Census data)
- Provides insight into health disparities in LA
 - One main goal of CBPR: Improve community health outcomes and reduce health disparities (Collins et al., 2018)
- Can provide information about which communities need interventions
 - Important foundation for CBPR
- Important to collaborate with community members (use more than just large-scale descriptive data) (Collins et al., 2018; Minkler, 2004)

Learning Takeaways

- Time, resources, and team work needed to create data centers such as KIDS COUNT
- Importance of presenting data in a straightforward, effective, accessible manner
- Need a variety of demographic, health, socioeconomic, educational, familial, and community indicators to paint a comprehensive picture of child well-being

Applications to School Psychology

- Reminder of the importance of a holistic view of child well-being
 - Consider familial, community, and cultural factors that influence child outcomes
- School psychologists must employ an ecological, community-based approach to translate data into effective interventions (Nastasi et al., 2000)



References

- Collins, S. E., et al. (2018). Community-based participatory research (CBPR): Towards equitable involvement of community in psychology research. *American Psychologist*, 73(7), 884-898. <http://dx.doi.org/10.1037/amp0000167>.
- KIDS COUNT Data Center (2021). About KIDS COUNT Data Center. KIDS COUNT. <https://datacenter.kidscount.org/about>
- KIDS COUNT Data Center (n.d.). Data by Topic. KIDS COUNT. <https://datacenter.kidscount.org/topics>
- Maine Children's Alliance (2019). 2019 Maine KIDS COUNT. Maine Children's Alliance. https://mainechildrensalliance.org/site/assets/files/1241/kidscount_2019.pdf
- Minkler, M. (2004). Ethical challenges for the "outside" researcher in community-based participatory research. *Health Education & Behavior*, 31(6), 684-697. <http://dx.doi.org/10.1177/1090198104269566>
- Nastasi, B. K., Varjas, K., Schensul, S. L., Silva, K. T., Schensul, J. J., & Ratnayake, P.(2000). The participatory intervention model: A framework for conceptualizing and promoting intervention acceptability. *School Psychology Quarterly*, 15, 207-232.